

annual **REVIEW**

YEAR ENDING 31 DECEMBER 2014



MOUNTAIN BOTHIES ASSOCIATION

2014... A year in the life of the MBA

Although most of our maintenance work takes place in the period April to October, there is plenty to keep us occupied during the rest of the year. Here are some examples:

Planning

The cycle of bothy maintenance starts with the Area planning meetings in the previous autumn. The nine Area committees determine what work is required to be undertaken on the bothies for which they are responsible and draw up a programme of work. The Management Committee and Trustees then decide which major projects will be taken forward and allocate the funding. A further round of meetings in the spring reviews progress.

Training

This year we organised courses in first aid and in working at height using fall restraint.



Management meeting, Glasgow SYHA



First Aid course, Greenhead

2014

J

F

M

A

M

J

Publicity

We kept the public and media informed by issuing News Releases and responding to queries. Our members received quarterly Newsletters. Our website is probably our most used communication tool. In 2014, we started work on developing a new and expanded site. In preparation for our 50th anniversary year in 2015, we compiled and published *Mountain Bothies: Celebrating 50 years of the MBA*.

Editor: Neil Stewart
Design: John Mitchell

Photo credits: Alan Bellis, Roger Mhul, John Mitchell,
Neale Robertson, Neil Stewart

Liaison

We liaise with both owners throughout the year discussing projects, drawing up user agreements, and dealing with any problems that arise.

Elections

For the first time in a number of years, there were elections for Chairman, Trustees and members of the Management Committee. Simon Birch, who has lots of hands-on experience of both maintenance as Maintenance Organiser (MO) for Camban, was appointed as our new Chairman.



Chairman, Simon Birch



Area meeting, Garrigill

J A S O N D 2014

Accountability

We published our Annual Report and accounts in July and held our AGM in October.

Promotion

We attended the annual Dundee Mountain Film Festival at the end of November. It is a good opportunity to meet the hill-going public and to promote the work of the Association. In 2014, we also promoted the Association at a Mountain Safety Day organised by Mountain Aid.

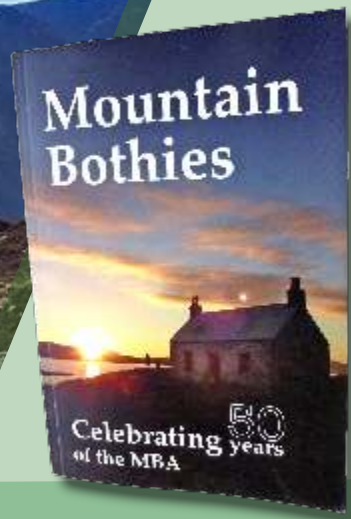
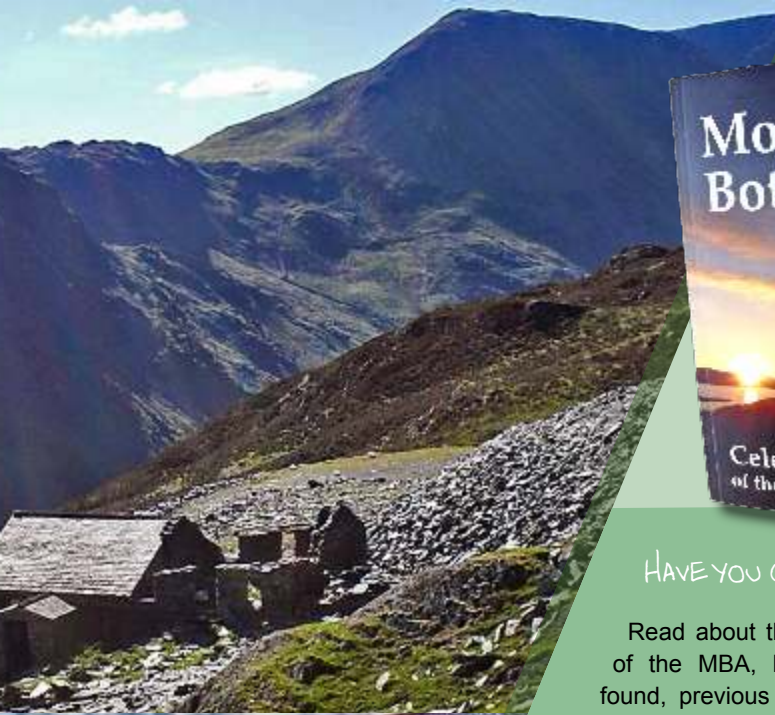
BOTHY NEWS

Safety in Bothies

Safety at bothies is a prime concern. We have well-developed plans in place to ensure the safety of our volunteers at work parties and these are kept under regular review. Training is given where appropriate. As far as bothy users are concerned, we have, in recent years, been looking closely at fire prevention measures in all the bothies that we maintain. Fire Risk Assessments have been completed for most bothies. As a result of these assessments, changes have been made to the structure of a few bothies. In some cases, an upper floor has been closed off, a staircase re-aligned, a fire escape window installed, and so on. Fire Action Plans giving advice in the event of an emergency have been posted on bothy notice boards. We have also been trialling the siting of fire extinguishers and fire blankets in some bothies. Carbon monoxide alarms have been fitted in rooms containing stoves so that bothy users can be alerted if the stove or flue is not working correctly and there is a resultant build-up of carbon monoxide gas.

Bottom
Fall restraint course





HAVE YOU GOT YOUR COPY YET?

Read about the history of the MBA, how the buildings were found, previous occupants, work parties, bothying tales and much, much more.

"A delightful read" – Scotland Outdoors

"full of fantastically appealing stories" –
The Great Outdoors



LAKE DISTRICT

Dubs Hut

Our new Lake District bothy, Dubs Hut, is now up and running. We have repaired all windows and replaced the glass, the whole of the inside has been painted and the former fireplace built up to provide a seated recess. Doors and window frames have been given a new coat of paint. As well as being worth a visit in its own right, Dubs Hut serves as an overflow bothy when Warnscale Head is full (there is only room for three in the latter).



Top and middle
Dubs Hut.

Camasunary

In his article on Partnership in *Mountain Bothies: Celebrating 50 years of the MBA*, Roger Muhl wrote: *"Owners, [and] those who work for them...have frequently blessed MBA with acts of generosity and kindness"*. Never has this been more apparent than in the case of the building at Camasunary, a popular bothy situated in magnificent scenery at the foot of Blaven in Skye.

The landowner, Alan Johnson, had told us a few years ago that it was his intention to eventually take back the building for his own family use.

In the usual nature of things, that became public knowledge. A number of people got in touch expressing concern that when that happened, there would be no basic shelter available in this stunning area.

Aware of the popularity of the bothy, Alan Johnston proposed that he provide a replacement bothy. After discussing this possibility with him, it was agreed that Alan would make all the arrangements for the construction of a replacement building while the Association would take care of the fitting out of the interior. While the costs

Loch Scavaig and the Cuillins





Bothy with a view

would be shared, the greater part would be met by Alan.

Alan told us: *"The old bothy is known to my family as the Celtic Lodge. I am probably the last person to have lived full time in it, in the summer of 1970. Since becoming a bothy, it has brought a great deal of pleasure to many people from all over the world. The last time I stayed in it, there were folk there from Ukraine, Poland, Germany, France, England, Wales and Scotland, all at the same time."*

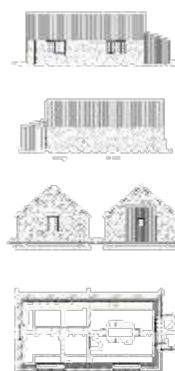
The new bothy—a magnificent stone building designed and built to withstand the area's rugged climate—was constructed by 59 Squadron Royal Engineers. And the

climate was certainly "rugged" during the construction phase! Major Iain Lamont, the Officer Commanding, commented that *"building the new bothy was exactly the arduous training opportunity that I was looking for. We have been really tested, working hard, isolated, and battered by the weather. I'm over the moon that the walking and mountaineering community will benefit from it in years to come."*

By the time you read this, MBA volunteers should have completed the fitting out of the new building.

The Commando connection

"During the last war, the Commandos training at Lochaber did a live fire exercise at Camasunary, landing in the little rocky bay at the east end of Camasunary Bay, and attacking a boathouse at the top end of Loch Na Creithach. Remnants of that building can still be seen. Ever since then, that little bay has been known by my family as Commando Bay. Perhaps there is some quirk of history here, given that 59 Squadron have built the bothy on virtually the same site about 60 years on."
Alan Johnson





SOUTH UIST

Uisininis

The Association depends on its volunteers. Without them, we would not exist and it is likely that many of the bothies that we maintain would not exist either. Most work parties are straightforward, but occasionally one comes along that throws up exceptional challenges that test our volunteers to the limit.

Uisininis on the uninhabited eastern shores of South Uist can lay claim to the title of the remotest building that we maintain. So when the roof needed to be replaced it was clear that this would be a more difficult task than is the case with our more accessible bothies.

Everything had to be taken in by boat and landed on the shore. Getting materials to safety out of reach of the sea - cement, sand, timber, roofing sheets etc. - was a demanding task in itself: a hard first day's work, but normal at coastline bothies. And the fact that the weather was not playing ball was not particularly unusual either.

What was unusual was that the wind and rain did not let up for the next fortnight, preventing any work whatsoever being done on the roof. By the time that the weather relented, a number of volunteers had had to leave to go back to their day jobs and other commitments. Only the Area Organiser (AO) and MO were left! Fortunately, another volunteer turned up for a weekend and one of the original group of volunteers returned at the end of week three. By the Thursday of the fourth week the roof was finished. Just as well - by that time, another limitation had become clear - food. As the MO put it, "when we left on the Friday there was not enough left to bait a rat trap"!

While this work party was exceptional in the difficulties encountered, it demonstrates the commitment and determination of those who give of their time to maintain simple shelters in remote areas for the use and benefit of all who love wild and lonely places. We thank them all.

Donors to the MBA

Every year we benefit from the generosity of individuals, their friends, and various funds who provide substantial donations for specific projects or for our general expenditure. We regret that it is not possible to list each and every donor, but we are delighted to record our sincere appreciation to them all. Following is a list of some of those who have donated in 2014; it includes all of the donations that we received “in memory” and also donors to any bothy-specific funds where balances remained during the year.

Infinis plc (Carron)

Mr & Mrs WG Randall in memory of

Nicholas Randall

Legacy, Clifford Frank May

David Brown

John Stancer

Donations in memory, David Ferguson

David Finney

Michael Bostelman (Dryfehead)

Donations in memory, Alan Galt

(North West Scotland Bothies)

Donations in memory, Alan Bowley

Care today

Forfar Hillwalking Club

HM The Queen

Langside Mountaineering Club

Derek B Finnie

Cairngorm Reindeer Centre

Iona Community

Richard Popple

Visitors to The Lookout

JD Goodall

Paul MacEwan

RJ Peckham

Rolf Gohdes

Gordon Old

William Lawrence

Pat Hughes

Hendrikse & Hubregtse

Donald Wood (Greg's Hut)

Donations in memory, Desmond

Puttick

Donations in memory, George Ross

Yarm School (Craig)

Petra Mohylova

Leslie Hopkins

Andrew Jenson Memorial (Gameshope)

A Shribman

Simon Harris (Nant Rhys)

Angela Gallego-Sala

Andrew Heald

BP Foundation

J Flannery

Shane Bermingham

Pete Day

Rob Patterson

Tony Camerford (Ruigh Aiteachain)

Dallam School

Adventure Rehab Ltd

Donation in memory, Bob Kyle

Adam Wujkowski

John & Helen Read

Bothy owners

It is common for people to ask MBA officers where all the money for the work that we do comes from; much less often are we asked about the bothies themselves. Each bothy is property belonging to an individual or a trust or an organisation that has decided to make it available for public use. The following list is by way of expressing our thanks to the very generous people who own the bothies that we are able to maintain.

H.M. The Queen	<i>Gelder Shiel Stable</i>
Earl of Mexborough	<i>A'Chuil</i>
Alan Johnson	<i>Camasunary</i>
The Buccleuch Estates Ltd	<i>Burleywhag, Kettleton Byre</i>
Dwr Cymru (Welsh Water)	<i>Arenig Fawr, Dulyn, Grwyne Fawr</i>
Scott Bremner	<i>Blackburn of Corrieyairack</i>
The Trustees of Lindsay C N Bury	<i>Cruib</i>
Mr R A Green	<i>Croft House</i>
R H F Le Fleming	<i>Cross Fell (Greg's Hut)</i>
The Proprietors of Glenfalloch Estate	<i>Doune Byre</i>
Trustees of Philip R Smith	<i>Easan Dorchia</i>
Timothy Leslie	<i>Essan</i>
Andras Ltd	<i>Faindouran</i>
The Royal Society for the Protection of Birds	<i>Fords of Avon, Ryvoan</i>
Trustees of Atholl Estates	<i>Tarf Hotel, Allt Scheicheachan</i>
Dunlossit Trustees Ltd	<i>An Cladach</i>
Mr Enghart	<i>Clennoch</i>
Peter Stewart Sandeman	<i>Peanmeanach</i>
Captain N J N H Wills	<i>Bearnais</i>
Ben Alder, Dalwhinnie & Strathmashie Estates	<i>Ben Alder Cottage, Culra</i>
Borders Forest Trust	<i>Gameshope</i>
Mrs A K Boyd	<i>Brattleburn</i>
Mrs C W Wilson	<i>Carron</i>
Sarah Troughton	<i>Cadderlie</i>
Invercauld Estate	<i>Callater Stable</i>
The West Highlands Woodlands	<i>Gleann Dubh-lighe</i>
Aberchalder Estate	<i>Glenbuck</i>
Westminster Estates	<i>Glencoul, Glendhu</i>
Andrew Fletcher	<i>Glengarrisdale</i>
The Bothy Trust	<i>Glenpean</i>
Philip Fleming, Robert Fleming & Trustees	<i>Gorton</i>
The National Trust for Scotland	<i>Camban, Corrou, Hutchison Memorial Hut</i>
Fasque & Glendye Estates	<i>Charr</i>
The Block & Fooks Families	<i>Coire Fionnaraich</i>

The Corriemulzie Trust	<i>Coiremor, The Schoolhouse</i>
The Bacon Trustees	<i>Craig</i>
Mrs Richardson & Mr Richardson	<i>Warnscale Head</i>
Mrs Rosemary Anthony	<i>Greensykes</i>
Glenfeshie Estate Ltd	<i>Ruigh Aiteachain</i>
The Trustees of Gruinard Estate	<i>Shenavall</i>
Donald Angus Cameron of Lochiel	<i>Invermallie, Kinbreak</i>
Secretary of State for Defence	<i>Kearvaig</i>
Neil Scobie	<i>Knockdampf</i>
Rio Tinto Alcan Highland Estates	<i>Lairig Leacach, Loch Chiarain, Meanach, Staoineag</i>
Ardtornish Estate Co Ltd	<i>Leacraithnaich</i>
Dalhousie 2006 Trust	<i>Shielin of Mark</i>
The Honourable Rupert Christopher Soames	<i>Sourlies</i>
Braeroy Estates Ltd	<i>Luib Chonnal</i>
Smech Properties Ltd	<i>Maol Bhuidhe</i>
United Utilities	<i>Mosedale Cottage</i>
Eriboll Estate Trust	<i>Strabeg</i>
The Glenelg Sheepstock Club	<i>Suardalan</i>
Assynt Foundation	<i>Suileag</i>
Storas Uibhist	<i>Uisinis</i>
Mark Z de Ferranti	<i>Oban</i>
Glendale Estate Trust	<i>Ollisdal</i>
Mr T P Radford	<i>Tomsleibhe</i>
Applecross Estate Trust	<i>Uags</i>
Mountain Bothies Association	<i>Over Phawhope</i>
The Scottish Ministers (SGRPID)	<i>Achnanclach, The Lookout, Strathan, Strathchailleach, Taigh Thormoid Dhuibh</i>
The Scottish Ministers (SNH)	<i>Dibidil, Guirdil</i>
The Scottish Ministers (FCS)	<i>Mark Cottage, Resourie, Rowchoish, Tunskeen, Taigh Seumas a' Ghlinne, White Laggan</i>
The Forestry Ministers (FCE)	<i>Green, Haughtongreen, Kershopehead, Roughside, Spithope, Wainhope</i>
The Welsh Ministers (NRW)	<i>Moel Prysgau, Nant Rhys, Nant Syddion, Penrhos Isaf</i>
Michael Bostelman & Julian Whately	<i>Dryfehead</i>
Mr Edward Naish	<i>Cae Amos</i>
The Honister Slate Mine Company	<i>Dubs Hut</i>
Elan Valley Trust	<i>Lluest Cwm Bach</i>

Land in the ownership of the Scottish Ministers is managed by the Scottish Government Rural Payments and Inspections Directorate (SGRPID), the Forestry Commission Scotland (FCS) and Scottish Natural Heritage (SNH). Land in the ownership of the Forestry Ministers (FCE) is managed by the Forestry Commission England. Land in the ownership of the Welsh Ministers (NRW) is managed by the Natural Resources Wales.

In 2014...

John Arnott retired as our Chairman and was succeeded by Simon Birch.

We took on the maintenance of a new bothy—Dubs Hut—in the Lake District, agreed to take on new bothies at Flittingford in the Kielder Forest and at Cae Amos in Wales, and reached agreement on a replacement bothy at Camasunary in Skye.

We closed Culra bothy in the central Highlands of Scotland due to danger from asbestos. At the end of the year, a decision was still awaited on its future.

We spent over £44,000 on maintenance activities.

We ran training courses in fall restraint and in first aid for our volunteers.

Looking forward to our 50th anniversary in 2015, we published *Mountain Bothies: Celebrating 50 years of the MBA.*



Our volunteers...

Contributed over 1152 working days.

Undertook maintenance work at 59 bothies.

Scottish Charity No: SC008685

Company Number: SC191425, limited by Guarantee

Registered office: Henderson Black & Co. Edenbank House, 22 Crossgate, Cupar, KY15 5HW

mountainbothies.org.uk

